

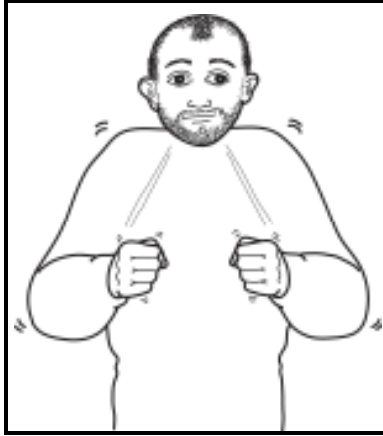
## FOG



Open hands (palms forward, pointing in/up) make slow alternate inward circles in front of face.

Diagrams, text and descriptions © SIGNALONG

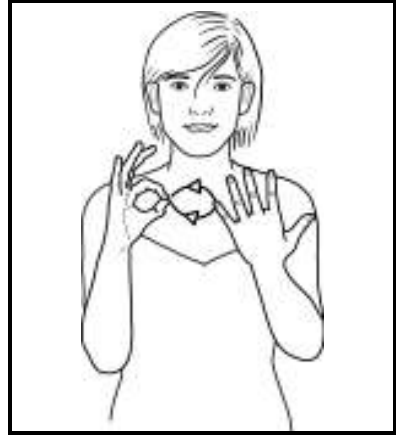
## COLD



Hunched shoulders, fists in front of body (palms in, pointing forward) mime shivering.

Diagrams, text and descriptions © SIGNALONG

## LEAVES



Working "O" hand (palm in, pointing up) against little finger of supporting open hand (palm back, pointing up); working "O" opens and closes while hand moves out outlining shape of leaf.

Diagrams, text and descriptions © SIGNALONG

## RED



Working index hand (palm back, pointing up) flicks forward off bottom lip changing to "R" hand.

Diagrams, text and descriptions © SIGNALONG



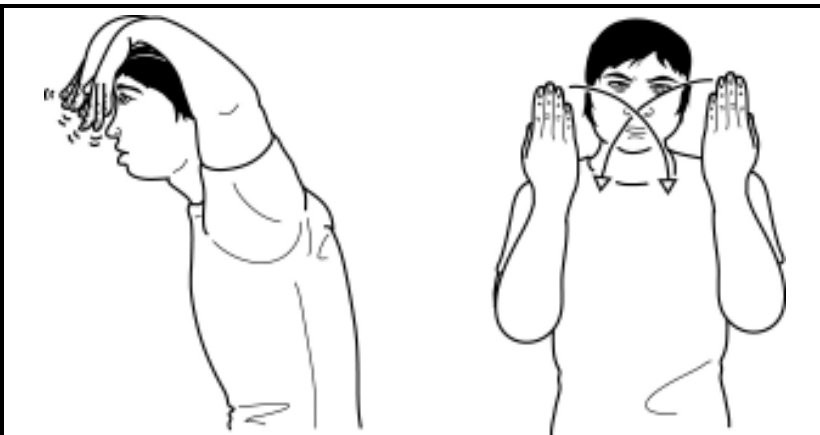
## GOLD



Make letter shape "G"; then working hand springs up changing to open hand (palm back, pointing in/up).

Diagrams, text and descriptions © SIGNALONG

## HALLOWE'EN



Open hands (palms back, pointing down) at head height quiver. Body looms forwards to sign "ghost"; then flat hands (palms back, pointing up) held in front and to each side of face, bend towards each other from wrists until hands touch with working hand in front to sign "night".

Diagrams, text and descriptions © SIGNALONG

## AUTUMN



Working open hand (palm down, pointing forward/in) moves down to working side from fingertips of supporting flat hand (palm in, pointing up) with fluttering motion.

Diagrams, text and descriptions © SIGNALONG



## **OCTOBER**

Goodbye long, sunny days and hello cold, foggy mornings. Autumn marks the transition from summer into winter. Its main feature is the shedding of leaves from trees as they pave way for further growth. Taking long walks through woodlands encourages conversation about the changes in colour.

Signalong is made accessible by its approach to how the signs are formed, analysing them for handshape, orientation, placement and movement, supporting the descriptions with clear line drawings. This methodology enables parents and practitioners to produce accurate signs taken from British Sign Language which are relevant to their situation.

The Signalong Group is a charity (no 1039788) which provides resources, training and free advice, and readily works with others in the field to promote communication skills for children and adults with speech, language and communication needs.

For information about Signalong resources please go to our website at [www.signalong.org.uk](http://www.signalong.org.uk)

**THE SIGNALONG GROUP**  
**Stratford House Waterside Court**  
**Rochester Kent ME2 4NZ**  
0845 450 8422  
[www.signalong.org.uk](http://www.signalong.org.uk)