



INDEPENDENT TRAVEL

Parent/Carer Information



SWINDON
BOROUGH COUNCIL



Introduction:

The Independent Travel offer will improve and enhance life skills and independence for our Children and Young People (CYP) within the Swindon Borough Council area. This is delivered through the completion of Independent Travel Training which is completed on a 1:1 basis, with an option which is best suited to the CYP.

Why Independent Travel Training?

The CYP who complete Independent Travel Training will gain experience and wider confidence with travel and independence skills. This will support not only their education, but will open up a variety of social activities. In doing so, this will support their development and grow their individual skill sets.

Who qualifies?

Any CYP with an Education, Health, and Care Plan (EHCP) who is eligible for travel support under our policy. This can be found by scanning the code here.



Benefits to you:

Through the training, we aim to free up resource within the setting by supporting the individual growth of each CYP. This will give them more freedom to develop their skills and responsibilities within their setting, and supporting the development of independence for the CYP.





Benefits to CYP:



Confidence – An increase in confidence, not only around travel but with interaction with others.



Lifestyle benefits – This could be an array of benefits, whether they are leisure based or otherwise. This can also promote healthier lifestyles .



Increased wider opportunities – Through access to independent travel, this can help promote opportunities to CYP such as; access to employment, further education and exploration of the local area. Social opportunities will increase through being able to travel to set destinations.



Increased independence – The ability to travel alone and to other destinations.

Training includes:



Road safety and awareness – Sessions to ensure that the CYP has a basic knowledge and understanding of road safety and awareness. This can be delivered in groups or 1:1.



Route planning – As part of the training we will be completing route planning to ensure that the CYP is aware that there could be multiple routes to a destination. This will look at the safest route to take.



Risk assessment/management – We ensure that CYP have a risk assessment (where appropriate) which is undertaken as part of the training. We will ensure that we understand what risks apply and how to mitigate and manage these risks. Alongside this we will look at how some risks will be outside of the CYP's control.



Problem solving – Within the training, there could be times when problem solving skills need to be applied. The training will address how this can be put in place, through real life scenarios and also what-if scenarios?





Schemes:

Safe Place Scheme Is a National Network of all of the Safe Place schemes. It is designed to help make it easy for CYP to find a safe place if needed by using its app and website. Each safe place is identified by displaying the safe place scheme logo. More details can be found by scanning the QR code.



Options:



Walking – This option involves a safe walking route from home to the CYP’s educational setting.



Bus – This option will involve using the local bus service to get to your educational setting. With this option, there will be interaction with the general public. This option will be pre-planned to allow for getting to the bus stop and then onto the education setting.



Train – In some cases, CYP may be required to travel by train. If so, we will ensure that they are able to get to and from the train station and are taught how to buy tickets and board the train in a safe manner. We would provide funding where necessary for the days this travel option is required. This could be a Personal Travel Budget (PTB) or covering the costs of the train ticket.



Cycling – If CYP are completing their route through cycling, they will be shown safe cycling techniques and routes. This will again be from their home to their education setting and then back again. This could be supported through a variety of options and schemes. Already own a bike? – We could have this serviced and checked to ensure that it is road worthy. Need a bike? – We aim to help provide CYP with one.



Mixed Options – This is a blended approach to travel, this may include usage of multiple options, to ensure that the CYP is able to gain access to their provision independently.

All of the above options will be looked at for CYP on a case by case basis, where all factors will be taken into consideration to ensure that the right option is put forward and all the necessary support is in place.





Support:

Support will be tailored to individual needs following assessments and could include an element of 1:1 support for a time limited period.

Bespoke training to suit each CYP's skills and option – As part of the ongoing training, we will review each CYP's circumstances on a case by case basis, looking at the way in which we can best support the CYP for successful engagement and completion of the course.

Relevant training to assist with the journey that will be undertaken.

Assessment Tools:



Progress log to be maintained – This will highlight the daily progression being made within the training, for example – getting on the bus.



Stages checklist – An example for this would be checking CYP's knowledge and understanding around 'stranger danger' and 'how to deal with changes to time/schedules'. This checklist needs to be completed with confidence on three consecutive occasions before signing the CYP for independent travel training.



Shadowing – We will be able to shadow from a safe distance or use another trainer to assess to ensure that all steps are being followed.



Risk Assessments in place (where appropriate) – We will ensure that we understand what risks apply and how to mitigate and manage these risks. Alongside this we will look at how some risks will be outside of the CYP's control.



Quiz – Post training, CYP will be asked to complete a 'what-if?' quiz, which highlights the learning they have had and the scenarios that they may face.

Post training:

Catch-up – We will be making sure that contact is made after the training, this is for us to be able to get an understanding of whether or not a CYP is still travelling independently and if there is anything that needs to be modified, reinforced or added to the training to ensure that post training, they continue to access travel independently.

Check in – We will be getting further feedback from all areas- parent/carer(s), CYP and their educational setting.





FAQs:



Cost of the programme? Free for eligible CYP as per the home to school travel policy.



Will training have an effect on current transport arrangements? Once the training is completed, current arrangements will be changed to the identified travel option.



Can CYP access further training? Yes, although further training will be a part of the traded service.



Our CYP goes to college in Cirencester, will you help them go that far on their own? Yes, if this is the CYP's designated provision.



We worry about our CYP going on the bus on their own, how will you reassure us that the CYP will be safe? The trainer will ring you – as part of the process we will meet with you and your CYP to discuss the steps and how your CYP will be kept safe whilst training.



Does it always have to be to school? Currently yes, the focus is on home to school/college.



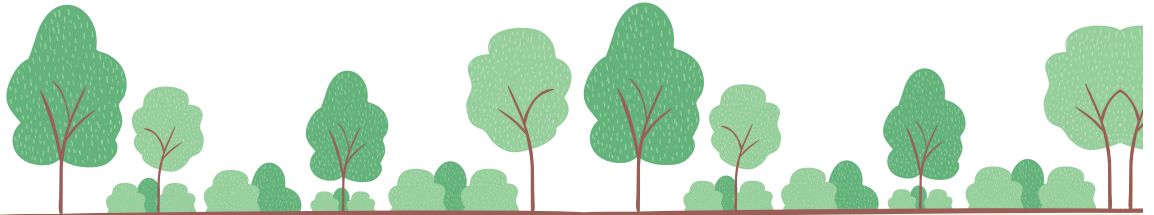
Our CYP would like to do a bit more, can this happen? Yes, once your CYP has completed their Independent Travel Training, we can offer further services.



Our CYP is a wheelchair user, and would like to go on their own sometimes, they know the battery could last till school, but what happens if it breaks down – it's normally good'. This would be dependent on the distance of the designated journey and the access to recharging the battery at the educational provision. If deemed necessary we could look into spare batteries to support this.



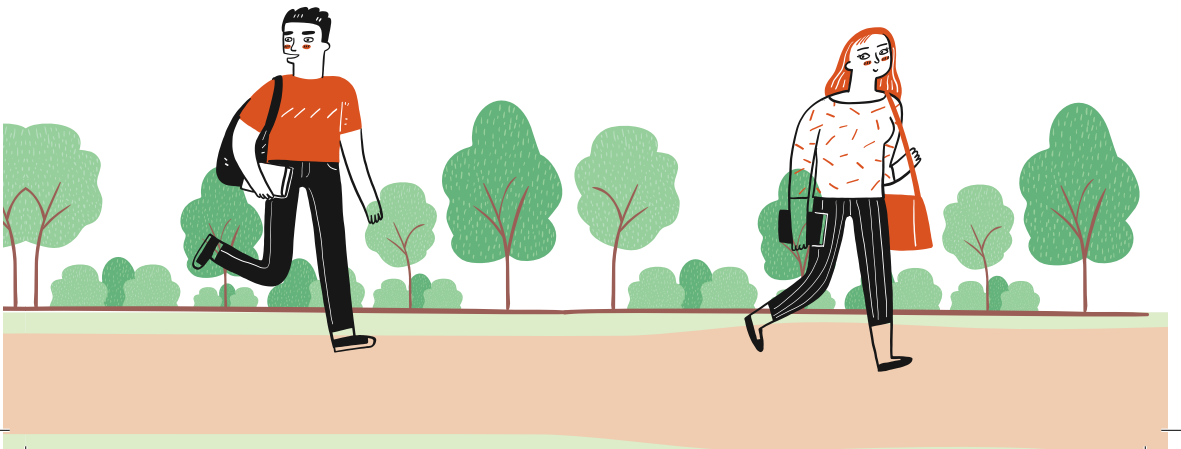
If our CYP cycles will they get help for getting safety equipment? Yes, we will support them in ensuring that they have all the relevant safety equipment.





Notes:

A series of 20 horizontal dotted lines for writing notes.



Contact Details:

independenttravel@swindon.gov.uk
or scan the QR code below for more information.

