

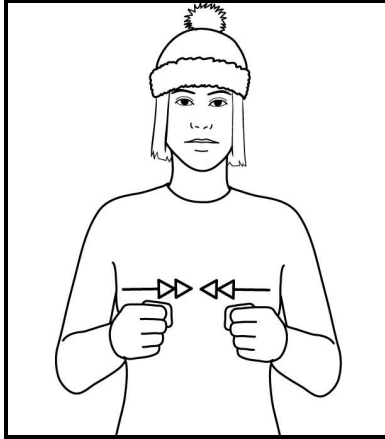
# Winter in Britain

## COLD



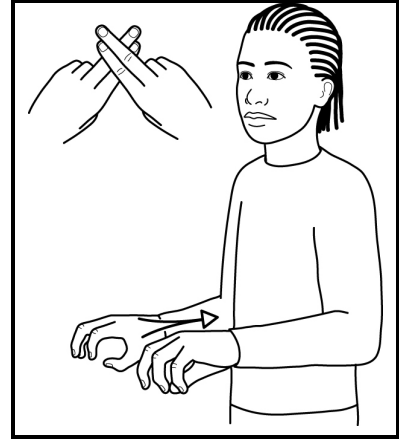
Hunched shoulders, fists in front of body (palms in, pointing forward) mime shivering.

## WINTER



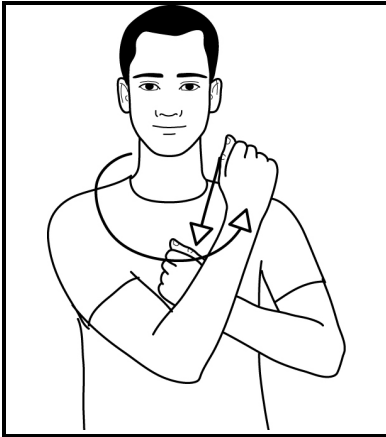
Fists (palms in, pointing forward) held in front of the body make two small movements in towards each other.

## FROST



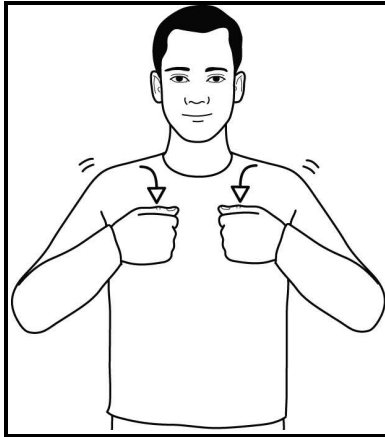
Make letter shape "F"; then clawed hands (palms down, pointing forward) pull back towards body, fingers tightening.

## SCARF



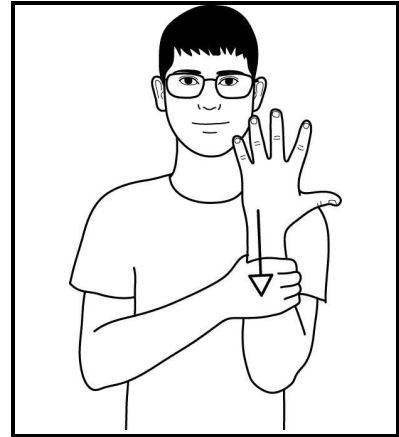
Closed hands at back of neck move forward, working hand crosses over to supporting shoulder as though wrapping scarf round neck.

## COAT



Closed hands mime pulling on coat, follow with mimed zip or buttons as appropriate if necessary.  
*Shoulders shrug.*

## GLOVES



Supporting open hand (palm back, pointing up); working full "C" hand mimes pulling on glove.  
*Repeat with other hand.*

**A3 COLOUR POSTERS OF SIGNS FOR CHRISTMAS & THE NEW YEAR AVAILABLE FROM OUR WEBSITE**



**The Signalong Group**  
**Stratford House Waterside Court**  
**Rochester Kent ME2 4NZ**

0845 450 8422

[www.signalong.org.uk](http://www.signalong.org.uk)

Communication skills for children and adults with  
speech, language and communication needs

Signing resources  
Visual communication resources  
Training  
Advice

# Winter in Britain

Winter is on the way – it's important to keep warm and wear appropriate clothing. It's also an opportunity to talk about physical sensations, the environment and familiar items of clothing in context. Associating words, signs and objects in appropriate settings helps to build language skills.

Signing is a simple way of reinforcing a verbal message, and in most cases there is a visual connection between the sign and the concept being conveyed. By using signs consistently a link can be established with the words and the whole communication process becomes easier.

Signalong has the largest illustrated sign vocabulary in Britain, adapted from British Sign Language for the needs and abilities of children and adults with speech, language and communication needs.

Signalong is made accessible by its approach to how the signs are formed, analysing them for handshape, orientation, placement and movement, supporting the descriptions with clear line drawings. This method enables families and practitioners to produce accurate signs relevant to their situation. Special vocabularies can be compiled on request.

The Signalong Group is a charity (no 1039788) which provides resources, training and free advice, and readily works with others in the field to promote communication skills for children and adults with speech, language and communication needs.

Training is provided both directly by the charity and through its national network of registered tutors. For information about courses, or becoming a trainer, please contact Sandi on 0845 450 8424.

For information about Signalong resources please go to our website at [www.signalong.org.uk](http://www.signalong.org.uk) or call 0845 450 8422 to request a catalogue

