



SWINDON
Carers Centre

Registered Charity No: 1061116 / Registered Company No: 3305621

Do you Care?

Parent Carers and Swindon Carers Centre



SWINDON
BOROUGH COUNCIL



What is a carer?

A Carer is a person who provides unpaid support to a family member, partner or friend who would otherwise be unable to manage without this support.

This could be due to illness, physical disability or Autism and/or learning disability, mental ill-health or substance misuse.



About us

Established since
1997

We have dedicated
teams who
support Adult
Carers, Parent
Carers and
Young/Young
Adult Carers.

At Swindon Carers
Centre, we provide
support, advice
and guidance to
carers from age 5
and upwards.

There are now an
estimated 21,000+
carers in Swindon

We work in partnership
with many
organisations such as:

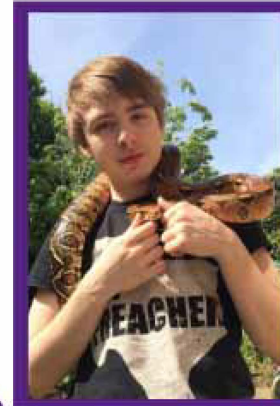
- SAM's
- Mind
- Alzheimer's Society

6 in 10 people will
be carers at some
point in their
lifetime

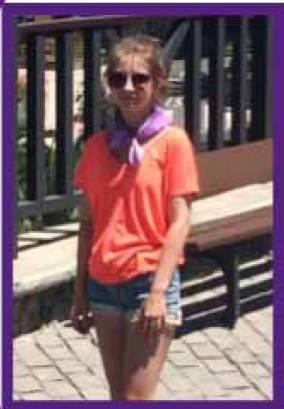
**Our Vision: Creating a community where carers are
recognised, valued and supported**

I am a carer!

I am a parent carer myself.
I have two teenage children, both on the Autistic Spectrum.
I also have experience as an adult carer.



Max, 20.
Max works at Aqualush, looking after tropical and marine fish and reptiles.



Millie, 18.
Millie currently attends college, accessing a specialist provision that provides 1:1 support at home.

How can we support you?

We support carers who look after children from 5 to 18, who have additional needs.

This can be anything from a physical disability, a neurological disorder or mental illness.

We engage with parent carers; completing assessments outlining how the child's needs affect the carer and the family as a whole.

Groups and activities will be offered to give the parent a chance for respite and support

We explore funding options for the parent carer, to allow them to access recreational/practical activities that they may not have been able to previously.

We are always happy to attend local open days and parent evenings to help raise awareness of Parent Carers

We will signpost or refer to either the benefits team within SCC or relevant organisations.

So...

If you think you may be a parent carer, please get in touch with us, using the following details.

01793 401094

carers@swindoncarers.org.uk

www.swindoncarers.org.uk

Or FaceBook and Twitter



SWINDON
BOROUGH COUNCIL

